

WHSC GP14 Sailing Instructions



1. RULES

1.1 Racing will be governed by the current Racing Rules of Sailing ([Sailing Racing Rules : Racing Rules | World Sailing](#)), the rules of the GP14 class association and these sailing instructions.

1.2 Racing Rules 27.1 and 40 will be changed as follows;

Adequate personal buoyancy must be worn by all competitors when afloat. Neither a wet-suit nor a dry-suit constitutes adequate personal buoyancy. Flag Y will not be displayed.

2. NOTICES TO COMPETITORS

2.1 Notices to competitors will be posted on the Official Notice Board located in the South clubhouse and on the club website.

3. CHANGES TO SAILING INSTRUCTIONS

3.1 Competitors will be informed of any changes in the sailing instructions by the Race Officer in the South clubhouse before the committee boat is underway.

4. SCHEDULE OF RACES

4.1 The schedule of races is defined in the Notice of Race (NoR) document.

5. CLASS FLAGS

5.1 The following Class flag will be used:

GP14 - White and blue pendant (international flag "A");

6. RACING AREAS

6.1 The racing area will be on the Welsh Harp Reservoir (see APPENDIX 1 – Chart of the Welsh Harp Reservoir)

6.2 This event has an A Day status (see APPENDIX 2 – Water Usage Categories).

7. THE COURSES

7.1 The course and the number of laps will be displayed on the committee boat before the warning signal is sounded.

7.2 A boat shall round a mark displayed on a red background to port and on a green background to starboard.

7.3 The number of laps will be indicated by a black number displayed on a white background

8. MARKS

8.1 Course marks will be the spherical orange/red buoys and a moveable pin end mark.

9. AREAS THAT ARE OBSTRUCTIONS

The following areas are designated as obstructions:

9.1 The two Blue Buoys mark the end of two separate underwater hazards protruding from the shore and an imaginary line from each blue buoy directly to the adjacent bank is deemed an obstruction to sea room.

9.2 Boats shall not pass between the Yellow Boom and the Dam. This ranks as an obstruction to sea room, and boats entering without good cause may be disqualified.

10. REGISTRATION

10.1 All competitors must register before racing to declare their intention to race. Any boat taking part in a race without registration may be scored NSO.

11. THE START

11.1 Races will be started using Rule 26. Several short hoots will precede the warning signal

Signal	Flag and sound	Minutes before starting signal
Warning	Class flag; 1 sound	5
Preparatory	P, I, Z, Z with I, or black flag; 1 sound	4
One-minute	Preparatory flag removed; 1 long sound	1
Starting	Class flag removed; 1 sound	0

11.2 The starting line will be between the mast of the Committee Boat and a white buoy.

12. THE FINISH

12.1 The finishing line will be between the mast of the Committee Boat displaying a blue flag and a white buoy.

13. SHORTENED COURSE

13.1. The course may be shortened at any mark by the presence of the committee boat flying a blue flag and flag S. Boats should pass between the mark and the committee boat to finish. Two hoots will be sounded when the lead boat rounds the last mark.

14. PENALTY SYSTEM

14.1 The scoring penalty Rule 44.3 will not apply.

15. TIME LIMITS

15.1 The time limit for any race is 60 minutes. When the first boat finishes within the last 20 minutes of that time, the Time Limit will be extended to 20 minutes after the finishing time of the first boat. No boat shall finish after the expiry of the time limit. This changes rules 35, A4 and A5.

15.2 If no boat has passed the first mark of the course within 30 minutes the race will be abandoned. Failure to meet the target time will not be grounds for redress. This changes rule 62.1(a)

15.3 A tail-end boat that has lost contact with the body of the fleet may be informed on the water, towards the end of the race, that she need not complete that lap, but may return to

the starting area for the start of the next back-to-back race. An appropriate finishing position will be recorded by the Race Committee. Failure to take advantage of this provision may result in any following back to back race being started before that competitor has returned to the starting area. This shall not be the basis for a redress request under Rule 62(a). This alters Rule 35.

16. PROTESTS AND REQUESTS FOR REDRESS

16.1 Protest forms are available in the South clubhouse.

16.2 Protests shall be delivered to the Race Committee within the protest time limit which is 30 minutes after the last boat has finished the last race of the session. The same protest time limit applies to all protests by the race committee and to requests for redress. This changes Rules 61.3 and 62.2.

16.3 Notices will be posted no later than 30 minutes after the protest time limit to inform competitors of hearings in which they are parties or named as witnesses. Hearings will be held in the Protest Room, located in the North clubhouse. Times will be displayed on the Official Notice Board.

16.4 Notices of protests by the race committee or protest committee will be posted to inform boats under RRS 61.1(b).

16.5 Video evidence is considered acceptable if agreed with the protest committee.

16.6 A breach of RRS 55 Trash Disposal may result in a penalty less than disqualification at the discretion of the Protest Committee.

17. SCORING

17.1 Number of races: The total number of races scheduled for each series will be published in the Notice of Race.

17.2 Series Qualification: Two races are required to be completed to constitute a series for the event. When fewer than the total number of races scheduled have been completed, a boat's series score will be the total of her individual race scores. When all scheduled races have been completed, a boat's series score will be the total of her race scores excluding her worst score, i.e., single discard.

17.3 Scoring System: The Low Point System will apply.

17.4 Scores applied by the race committee. See APPENDIX 3 – Scoring Notation and Definitions.

18. SAFETY REGULATIONS

18.1 A boat that retires from a race shall notify the race committee as soon as possible.

18.2 A capsized boat, whose mast is stuck in the mud, may receive assistance from the safety boat to right their boat. This alters rule 41

19. REPLACEMENT OF CREW OR EQUIPMENT

19.1 Substitution of damaged or lost equipment will not be allowed unless approved by the Race Committee

20. EQUIPMENT AND MEASUREMENT

20.1 A boat shall comply fully with her Class Rules.

20.2 A boat or equipment may be inspected at any time for compliance with the Class Rules.

21. USE OF CLUB BOATS

21.1 Club boats can only be used for racing when the predicted wind speeds on The Met Office website on the day of the race, do not exceed the following at any time during the racing session.

GP14: mean 17 kts/20mph/Force 4 – gusting 27kts/31mph/Force 6
Laser: mean 20 kts/23mph/Force 5 – gusting 27kts/31mph/Force 6

This will be based on the forecast at 10:00 am. There will be no decisions made by the club before the race day, and the Race officer will enforce any restrictions based on The Met Office forecasts.

22. RADIO COMMUNICATION

Except in an emergency, a boat shall neither make radio transmissions while racing nor receive radio communications not available to all boats. This restriction also applies to mobile telephones.

23. RISK STATEMENT

Rule 3 of the Racing Rules of Sailing states: “The responsibility for a boat's decision to participate in a race or to continue racing is hers alone”

Sailing is by its nature an unpredictable sport and therefore inherently involves an element of risk. By taking part in the event, each competitor agrees and acknowledges that:

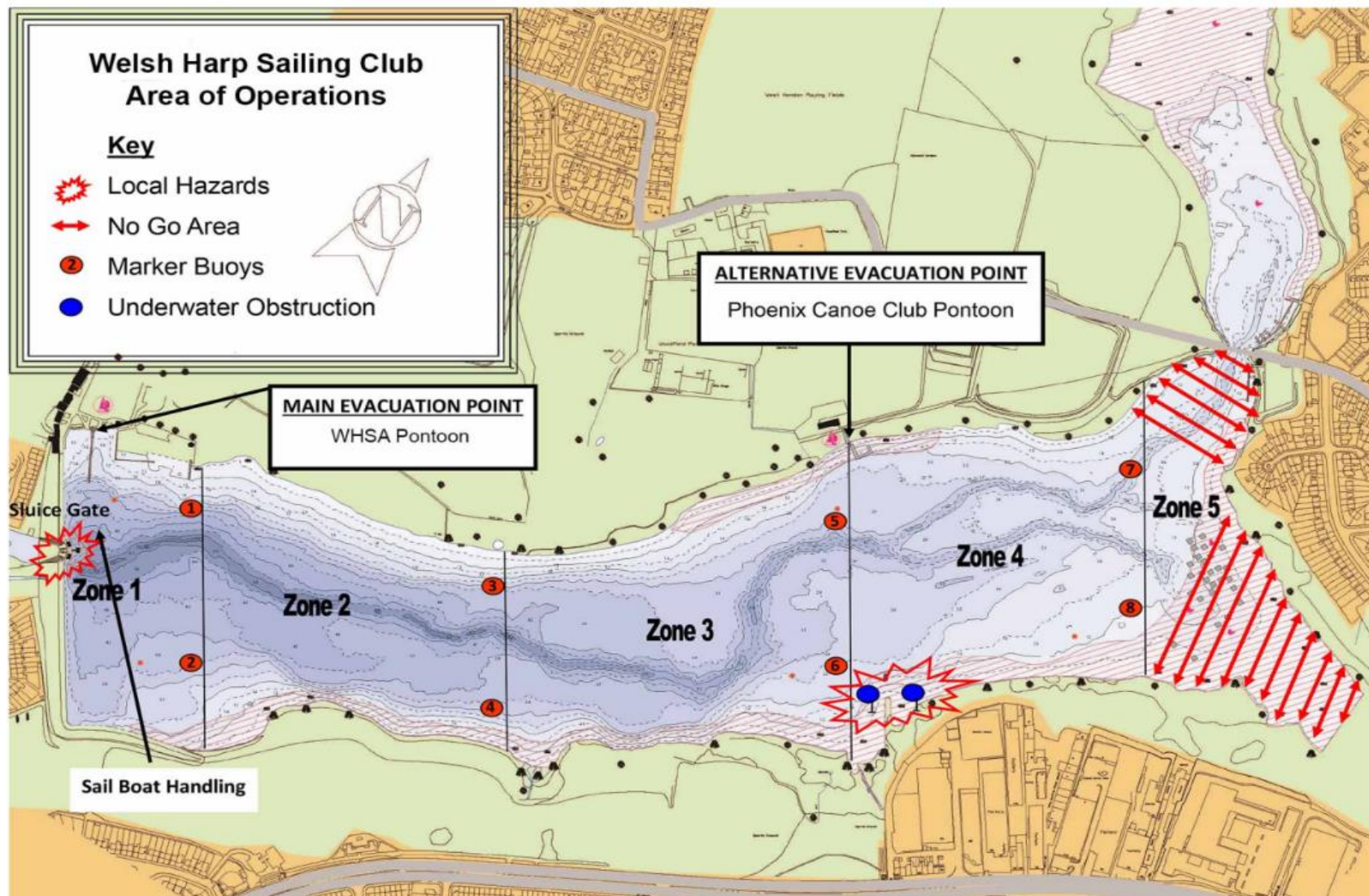
- (i) They are aware of the inherent element of risk involved in the sport and accept responsibility for the exposure of themselves, their crew and their boat to such inherent risk whilst taking part in the event;
- (ii) They are responsible for the safety of themselves, their crew, their boat and their other property whether afloat or ashore;
- (iii) They accept responsibility for any injury, damage or loss to the extent caused by their own actions or omissions;
- (iv) Their boat is in good order, equipped to sail in the event and they are fit to sail;
- (v) The provision of a race management team, patrol/safety boats and other officials and volunteers by the event organiser does not relieve them of their own responsibilities;
- (vi) The provision of patrol/safety boat cover is limited to such assistance, particularly in extreme weather conditions, as can be practically provided in the circumstances;
- (vii) It is their responsibility to familiarise themselves with any risks specific to the venue or the event drawn to their attention in any rules and information produced for the event or venue and to attend any safety briefings for the event.

24. INSURANCE

Each participating boat shall be insured with valid third-party liability insurance with a minimum cover of £3 million per event or the equivalent and competitors shall sign a declaration to that effect when registering

25. SAILING INSTRUCTIONS APPENDICES

APPENDIX 1 – Chart of the Welsh Harp Reservoir



APPENDIX 2 – Water Usage Categories

Category of day	Water usage
A	Event taking place, other training with discussion
B	No other Racing, while event takes place
Az	Exclusive zone, all other sailing must stay clear of zone
C	Event takes priority over all other sailing
Cz	Zone area takes priority over all other sailing within it.
D	Event taking place for information only, no priority

APPENDIX 3 – Scoring Notation and Definitions

Notation	Score	Definition
BFD	No of boats in race +1	Black flag disqualification
DNC	100 points	Did not come to the starting area (Clubhouse)
DNF	No of boats in race +1	Started but did not finish the race
DNS	No of boats in race +1	On the Water during the starting sequence, but did not start
DSQ	No of boats in race +1	Disqualification
DTC	No of boats in series +1	Signed on but was not on the water for any part of the race
NSO	No of boats in race +2	Did not sign on
OOD	15 points	Race office duty
OPN	No of boats in series +1	Racing off the Harp on the day of the race or teaching on a WHSC training course. Must inform scorer
OCS	No of boats in race +1	On course side at start