

# FISHERS GREEN SAILING CLUB

## THE VENETIAN TROPHY SAILING INSTRUCTIONS

15 March 2024

### 1) RULES

Racing will be governed by The Racing Rules of Sailing (RRS), the Equipment Rules of Sailing (ERS) and relevant class rules, except as any of these are changed by these Sailing Instructions or any Special Sailing Instructions (SSI) applicable to a particular event.

### 2) REGISTRATION PROCEDURE

2.1 Competitors to Open Meetings shall register by completing an entry form before racing and signing on at the Welcome Desk.

### 3) NOTICES TO COMPETITORS

Notices to competitors may be posted on the notice board following notification on social media when appropriate.

### 4) EVENT SPECIFIC CHANGES TO SAILING INSTRUCTIONS

Any event specific change to the sailing instructions will be advised by the race officer (RO) of the day, at least 30 minutes before the race(s) concerned and notified to the membership via social media and Mail-chimp if appropriate.

### 5) RACE SIGNALS

Signals will be displayed in front of the clubhouse at a shore based starting position, or on the Committee Boat or other support boat.

### 6) SCHEDULE OF RACES

6.1 The schedule of races is defined in the Notice of Race (NoR) document.

6.2 Several short hoots may precede the warning signal.

### 7) CLASS FLAGS

Class flags for Comet (Comet Pennant), Laser (D), Menagerie (M), Solo (R), GP14 (A) are stored in the committee boat. Other fleets may be class supplied for open meetings.

### 8) THE RACING AREA

8.1 Racing will take place on Holyfield Lake. A map of the lake showing mark positions is appended to these instructions (Appendix 1).

8.2 Boats are not permitted to enter the bird sanctuary (bounded approximately by the chain of islands and white spherical buoys situated in the SW corner of the lake), or sail within 15 metres of the north and east shores of the lake (right hand side as viewed from the clubhouse facing the lake) when fishermen are present. Both areas are shown on the map. These areas are obstructions under RRS. The penalty for infringement is disqualification unless exonerated under RRS 64.1.

8.3. If weed growth is so extensive as to make an area of the lake un-navigable and the area can only be passed on one side it shall be deemed a continuing obstruction under the RRS.

### 9) COURSES

9.1 The course and number of laps will be displayed on the Committee boat, or at a shore based starting position.

9.2 A boat shall round a mark displayed on a red background to port and on a green background to starboard. The letter G on a black background indicates that boats shall sail through the start/finish Gate at the end of each lap.

9.4 The number of laps will be indicated by a white number displayed on a black background.

9.5 A course change before the start will be signalled by flag C and five sound signals. The timing of flag C will not provide grounds for a competitor to seek redress.

9.6 The moving of marks during a race will be signalled by flying flag C and making sound signals. The mark moved and direction of the move will be communicated by appropriate gestures and/or verbal instructions. This changes Rules 33a & 33b.

### 10) RACING MARKS

10.1 Course marks 1 through 12 including "W(est)" are blue with white identification characters.

10.2 Temporary marks may be of any colour and their locations may change between or during races.

- 10.3 An inner distance mark, if used, will be a white unnumbered buoy. The outer distance mark will be an orange unnumbered sausage buoy. A course mark may alternatively be used as an outer mark. A sausage buoy may be used as a mark of the course if competitors are so informed.

## **11) THE START**

- 11.1 Races will be started using Rule 26 (i.e. 5, 4, 1, GO).
- 11.2 For timing purposes, sound signals shall govern. This changes Rule 26.
- 11.3 The starting line will be between a staff displaying an orange flag or shape on the Committee Boat or the shore based starting position if used, and an orange outer distance mark.
- 11.3 An inner distance mark may be laid near the committee boat or shore end of the line if shore based. If an IDM is used, a boat starting shall pass between the inner and outer distance marks.
- 11.4 The warning signal for each succeeding class in a sequence of starts shall be made with the starting signal of the preceding class. (This will usually apply for open events with multiple class starts).
- 11.5 A competitor trying to start later than 5 minutes after her starting signal will be scored Did Not Start (DNS). This changes Rule A4.

## **12) GENERAL RECALLS**

For consecutive starts Rule 29.2 is modified as follows:

- 12.1. The "1st Substitute" (General Recall) Flag will be lowered 1 minute after the start signal of each recalled class. The recalled race will be started after the last scheduled start, and the warning signal (Class Flag) will be displayed at the starting signal for the last scheduled start.
- 12.2. When more than one race is recalled, the starts will be in the same order as the original sequence.
- 12.3. When the only race recalled is the last in the sequence Rule 29.2 will apply.

## **13 THE FINISH**

- 13.1. The finishing line will be a transit line between a staff on the committee boat or shore-based position and either the rounding side of the nearby mark of the course, or an unnumbered orange finishing mark.
- 13.2. After the starting signal, the race committee may shorten the race (display flag S with 2 hoots). The course may be shortened at any rounding mark, between the mark and the staff displaying the flag S or a line the course requires boats to cross. Two hoots will be sounded when the lead boat rounds the last mark.

## **14) PENALTIES**

- 14.1 Penalties for an infringement of the Rules shall follow the RRS with the following exception.
- 14.2 Infringements of Rule 42 shall be addressed under Appendix P1 and P2 of the RRS. Observers may include any member(s) of the Race Committee or Sailing Committee. This modifies Appendix P1.1.
- 14.3 If a competitor is considered to infringe Rule 42, the witnessing competitor shall hail Protest! and call for an Alternative Penalty. For a first infringement, the offender shall execute an Alternative (2-turn) Penalty as per RRS Rule 44. Any subsequent alleged infringement shall lead directly to a protest.

## **15) TIME GUIDE**

The time guide for any race will be 40 minutes. After that time, and at the discretion of the RO, nearby boats will be finished. Those who would unreasonably delay other activities will be retired and given scores one greater than the number of boats who did finish. This changes Rule 35.

## **16) PROTESTS AND REQUESTS FOR REDRESS**

- 16.1 Protest forms are available from the office tray in the Clubhouse.
- 16.2 Protests shall be delivered to the Race Committee within the protest time limit which is 60 minutes after the last boat has finished the last race of the session. The same protest time limit applies to all protests by the race committee and to requests for redress. This changes Rules 61.3 and 62.2.
- 16.3 Competitors and witnesses will be informed within 60 minutes of the protest time limit of hearings in which they are named. Hearings will be held in or near the clubhouse.
- 16.4 Notices of protests by the race committee or protest committee will be posted to inform boats under Rule 61.1(b).
- 16.5 Video evidence is considered acceptable if agreed with the protest committee.

## **17) SCORING**

- 17.1 Number of races: The total number of races scheduled for each series will be published in the Notice of Race.
- 17.2 Series Qualification: One race is required to be completed to constitute a series for the event. When fewer than the total number of races scheduled have been completed, a boat's series score will be the total of her individual race scores. When all scheduled races have been completed, a boat's series score will be the total of her race scores excluding her worst score, i.e., single discard.
- 17.3 Scoring System: The Low Point System will apply.
- 17.4 Scoring abbreviations applied by the race committee will follow RRS A10
- 17.5 A single competitor cannot constitute a race.

## **18) SAFETY REGULATIONS**

- 18.1 Adequate personal buoyancy must be worn at all times when competitors are afloat. Wet or dry suits do not qualify as adequate personal buoyancy. This changes Rule 40.
- 18.2 All helms shall comply with instructions given by, or on behalf of, the Safety Officer (Water). Rule 4. The decision to race still applies Rule 3.

## **19) EQUIPMENT AND MEASUREMENT**

- 19.1 A boat shall comply fully with her Class Rules.
- 19.2 A boat or equipment may be inspected at any time for compliance with the Class Rules.

## **20) PRIZES**

- 20.1 For Open Meetings, prizes may be notified in the Notice of Race and be awarded in proportion to the number of entries.

## **21) DISCLAIMER OF LIABILITY**

Competitors participate in racing & leisure sailing entirely at their own risk. Neither FGSC or WHSC nor any class association will accept any liability for material damage or personal injury or death, sustained in conjunction with or prior to, during, or after the regatta.

## **22) INSURANCE**

Participating boats shall be insured with valid third-party liability insurance with a minimum cover of £3,000,000.

## **23) POSTPONMENT OF CLUB CHAMPIONSHIP RACES**

In order to avoid running Club Championship races when wind conditions are unsuitable for all classes, the Sailing Committee may agree to postpone that event to a later date. Wind conditions shall be assessed using the club weather station (display in the office) with particular reference to the 10 minute average wind speed. If the reading is less than 3 knots or greater than 20 knots the majority of the sailing committee present on the day can postpone the event whereby any racing held on the day will count towards the usual club long 'points' series. The Sailing Committee present shall communicate such re-scheduling to those members intending to sail, in a clear and conspicuous manner.

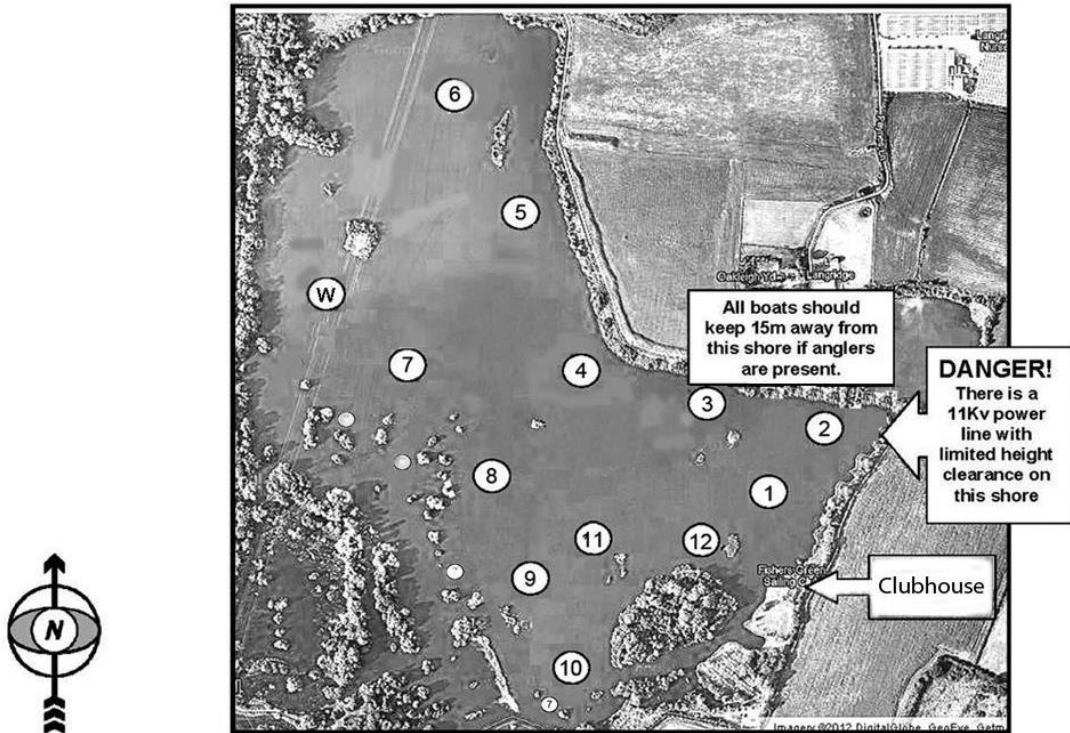
## **24) OUTSIDE ASSISTANCE**

In the event of a dinghy capsized or aground being assisted by the rescue team, she shall be allowed to continue the race and be given a finishing position. This changes RRS rule 41.



## Appendix 1 to FGSC Sailing Instructions – December 2019

### View of Holyfield Lake showing approximate positions of Racing Marks



The Numeric Racing Marks are blue drums with white markings, and the sequence runs around the lake counterclockwise.

NB The area to the west of the islands and marked on the water by small white buoys is a bird sanctuary which is out of bounds. When anglers are present or there are fishing rods visible, you must keep 15 metres away from the north and east shores indicated.