

Posted 20th January 2021

M.B.S.C. Sailing Instructions

GP14 Open

Saturday 12th June 2021

1.0 RULES

- 1.1 The series of races will be governed by the Racing Rules of Sailing (RRS), the MBSC sailing instructions, and any supplementary sailing instructions issued.
- 1.2 Each boat must comply with the GP14 Owners Association Class Rules and Constitution.
- 1.3 Each member of the crew must always wear an approved buoyancy aid when afloat. Flag Y will not be flown. This modifies RRS 40.

2.0 NOTICES TO COMPETITORS

- 2.1 Notices to competitors will be displayed on the notice board at the signing on point.

3.0 CHANGES TO THE SAILING INSTRUCTIONS

- 3.1 Any change to these sailing instructions will be posted half an hour before race start time on the day it will take effect, except that any change to the schedule of races will be posted not less than one hour before race start time on the day it will take effect.

4.0 SIGNALS MADE ASHORE

- 4.1 Except for starting signals for club line starts (where SI 10.1 applies), signals made ashore will be displayed from the race box flagstaff.

5.0 SCHEDULE

- 5.1 The schedule shall be:

Saturday 12th June

- Races 1 Race 1 will start no earlier than 12:45
- Race 2 will follow as soon as possible after the last finisher in race 1
- Race 3 will follow as soon as possible after the last finisher in race 2

6.0 CLASS FLAGS for GP14 Open

| Class | Flag |
|--------------|----------------------|
| GP14 | Numeral Pennant no 1 |

7.0 RACING AREA

- 7.1 Racing will take place in Lawling/Mundon Creek and on the Blackwater River in the vicinity of Osea Island, see Appendix A.

8.0 THE COURSE

- 8.1 When starting from the Club Line, the course to be sailed will be displayed on the notice board at the signing on point.
- 8.2 When starting from a committee boat, the course to be sailed will be displayed on the committee boat before the warning signal. But could also be displayed on notice board prior to/of 1st race as guidance.
- 8.3 The first race of the day may start from the Club Line and finish at a committee boat, with the second race starting from the committee boat and finishing on the Club Line.

9.0 MARKS OF THE COURSE

- 9.1 Please see Appendix A for mark/buoy type/colours. (If printed in black and white the navigation buoys are shown as dark-filled triangles and circles and the club rounding marks are shown as white-filled circles),
- 9.2 The Club Line (start and finish) is an imaginary line formed by the yellow transit on the MBSC Clubhouse. A single yellow triangle to the north marks the outer distance of the start line.
- 9.3 The committee boat start and finish lines are imaginary lines formed by the orange flag on the committee boat flagstaff and a club rounding mark, or a yellow inflatable buoy.

10.0 THE START SEQUENCE and LIGHTS

10.1 Club line starting lights:

As viewed from the water, you will see numbered blue boxes each containing 3 lights. For first start box 1 will illuminate, for the second start box 2 will illuminate, and so on.

10.1.1 Starting Sequence:

| Time | Title | Visual (from right to left in each box, as viewed from the water) | Sound |
|-------------|--------------|--|--------------|
| 5-minute | Warning | The 5 minute light (the right hand light) will illuminate. | Hoot |
| 4-minute | Preparatory | The 5 and 4 minute light (the middle light) will be illuminated | Hoot |
| 1-minute | One minute | The 5 and 4 and 1 minute light (the left hand light) will be illuminated | Hoot |
| 0-minute | Start | All lights in the box will extinguish | Longer Hoot |

If more than one start is scheduled, this sequence will be repeated for each race start. The starting signal for the first start shall be the 5 minute signal for the second start, etc.

10.1.2 Individual Recall:

Is signalled with an AMBER light on the right-hand lighting box and a hoot. The flashing amber light shall be extinguished when all premature starters have returned to the prestart side of the start line or 4 minutes after the starting signal for the class, whichever is the earlier. This modifies RRS 29.1.

10.1.3 General Recall:

Is signalled with a BLUE light on the box on the right and two hoots. This modifies RRS 29.2. If a general recall is signalled all starts will be delayed and will then be started in their original sequence.

10.1.4 All other signals will be made with flags flown from the race box flagstaff.

10.2 Committee Boats Start:

10.2.1 Starting Sequence

| Time | Title | Visual | Sound |
|----------|-------------|--------------------|-------|
| 5-minute | Warning | Class flag raised | Hoot |
| 4-minute | Preparatory | P flag raised | Hoot |
| 1-minute | One minute | P flag dropped | Hoot |
| 0-minute | Start | Class flag dropped | Hoot |

If more than one start is scheduled, this sequence will be repeated for each race start. The starting signal for the first start shall be the 5 minute signal for the second start, etc.

10.2.2 All signals will be made with flags flown from the committee boat flagstaff.

10.3 A boat starting later than 4 minutes after its starting signal will be scored DNS. This changes rules RRS A4 and A5.

11.0 SHORTENING COURSE AFTER THE START AT A MARK OF THE COURSE

11.1 Finishing at a Mark:

The committee boat will be at anchor, flying code flag S denoting an imaginary finish line between the adjacent mark of the course and the committee boat flagstaff

11.2 Direct return to and finish at Club Line:

A boat will be at anchor, flying code flag R denoting that boats are to round the adjacent mark of the course and return to the club line to finish.

12.0 SHORTENING COURSE AT THE CLUB FINISH LINE

12.1 If the course allows, the race maybe shortened at the club finish line as described in SI 9.2.

12.2 As the lead boat approaches the mark prior to the club finish line code flag S (with class flag if appropriate) will be raised on the race box flag staff.

12.3 This rule can be applied even if the was course was to be finished at a committee boat.

12.4 The rule can be applied in either direction of crossing the finish line.

13.0 THE FINISH

13.1 Club line finish as described in SI 9.2.

13.2 Committee Boat line finish as described in SI 9.3

13.3 Boats which, in the opinion of the Race Officer, have no chance of finishing within the time limits defined in 15.3, or are unlikely to change position, may be given a finishing position in the following way. A race committee vessel will travel back along the fleet recording finishing positions as boats are passed. A sound signal will be made for each boat recorded. A boat so notified is no longer required to sail the course, shall stop racing and shall return to the starting area, or return ashore if there is no more racing. A boat's finishing position when this process is applied shall be the position she would have received had she sailed the course and finished correctly, crossing the finish line in the position recorded by the race committee vessel. When two or more boats that are overlapped are notified in this way, they will be scored as if they were tied. No boat finished in this way will be awarded a position ahead of a boat that finished normally.

This changes RRS 28.1 and RRS 35. Failure to implement this shall not be grounds for redress.

14.0 TIME LIMIT

14.1 A time limit of 15 minutes after the first boat finishes is set, to be applied at the discretion of the race officer.

14.2 Boats not finishing within 1 ¼ hours after high water will be scored as DNF.

15.0 PENALTY SYSTEM

15.1 The Scoring Penalty, RRS 44.3, will not apply.

16.0 PROTESTS & REQUESTS FOR REDRESS

16.1 Protest shall be written on forms available from the race office. Protests shall be delivered there within 30 minutes of the last boat coming ashore. The protest time limit may be extended at the race committee's discretion.

16.2 Protests will be heard in the MBSC Clubhouse in the approximate order of receipt as soon as possible.

17.0 SCORING

17.1 Scoring will be in accordance with RRS 90.3, A2, and A4: Low Point System.

17.2 Discards:

| Races | Discards |
|-----------------------|-------------|
| 1 – 2 races completed | No discards |
| 3 races completed | 1 discard |

18.0 SAFETY REGULATIONS

18.1 Competitors shall "SIGN ON" before going afloat to indicate their intention to race, and shall "SIGN OFF" after each race within 30 minutes of finishing the race or, where races are held back-to-back, within 30 minutes of finishing the last of the back-to-back races. Where a race finishes otherwise than on the Club Line, the time for signing-off shall be extended by the race committee to allow adequate time for competitors to return to shore and sign-off. A competitor who does not comply with this Rule in relation to any race shall be disqualified from that race. Retirements shall be declared on the Signing On/Off sheet.

19.0 RADIO COMMUNICATION

19.1 A boat shall neither make radio transmissions nor receive radio communications not available to all boats. This restriction also applies to mobile telephones.

20.0 REPLACEMENT OF CREW

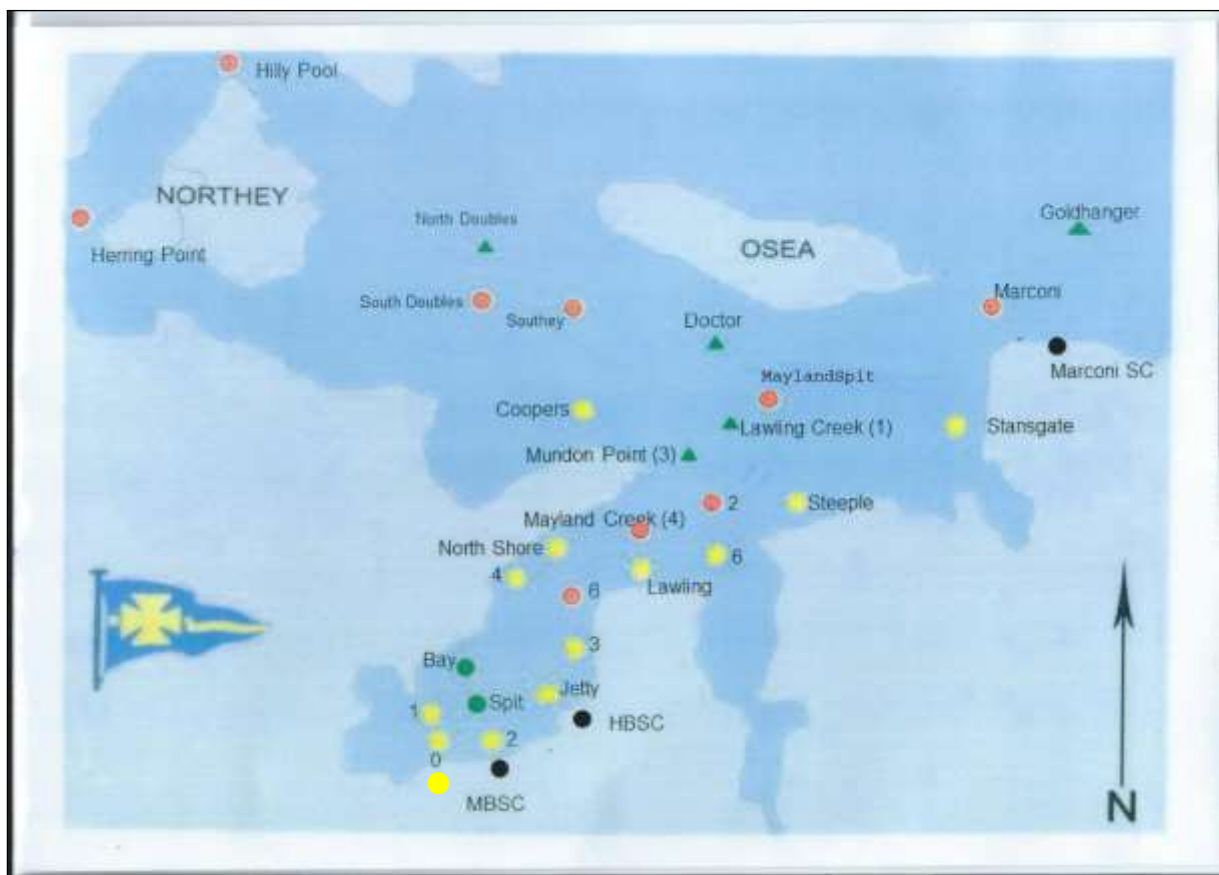
20.1 Substitution of competitors will be allowed without prior approval of the race committee but please inform the race committee.

21.0 CONDITIONS OF ENTRY

21.1 Each boat is entirely responsible for its own safety, whether afloat or ashore, and nothing, whether in the Notice of Race, or in these Sailing Instructions, or anywhere else, reduces that responsibility.

- 21.2 It is for the boat to decide whether it is fit to sail in the conditions in which it finds itself. By launching and going afloat, the boat confirms that it is fit for these conditions, and that its crew is competent to sail and compete in them.
- 21.3 MBSC provides these races on the strict understanding that neither the Club nor their representatives bear any responsibility for any loss, damage, death or personal injury however caused to any competitor, skipper or crew as a result of their participation in this event (unless caused by the deliberate act or default of the club or any of its members).
- 21.4 All boats are required to hold adequate insurance, and in particular to hold insurance against third party claims of at least £3 million or it's equivalent
- 21.5 **The MBSC Race management Committee reserve the right to change/update, so as to follow Government guidance for Covid 19**

Appendix A



Position of buoys are approximate

If red navigation mark 2 is used it will be described as "Red 2"

If red navigation mark 6 is used it will be described as "Red 6"